

NUMBER: SB 550-21-001, Rev B  
MODEL: ECLIPSE 550®  
SUBJECT: GDCA Gap Inspection

**Mandatory**

[www.ECLIPSE.aero](http://www.ECLIPSE.aero)

## 1. PLANNING INFORMATION

### A. Effectivity

Aircraft Serial Numbers: 550-0263 to 550-0265 and 550-0268 to 550-0278, with GDCA p/n 2188131 or 21-124627-1001 installed, post MB 500-21-001.

### B. Reason

This Service Bulletin inspects the GDCA and replaces the unit if needed.

Revision B of this Service Bulletin clarifies compliance and effectivity requirements.

### C. Description

This Service Bulletin provides instructions on measuring the gap between the retention collar and compressor bearing hub as well as part replacement, if needed.

### D. Relevant Publications

06-123838 – Eclipse 550® AMM, current revision

### E. Compliance

Eclipse Aerospace Inc. considers this to be a single, mandatory inspection that should be accomplished no later than the next 300 Hour/24 month Inspection.

### F. Approval

This Service Bulletin contains no modification information that revises the approved configuration and therefore does not require governmental or other regulatory agency approval.

### G. Labor Requirements

The following information is for planning purposes only.

(1) Estimated labor hours to perform:

Suggested number of personnel: 1

Inspection: 1.0 Hour

Part Replacement, if needed: 5.0 hours

**Total labor hours: 1.0 to 6.0 Hours**

The above is an estimate based on properly equipped and experienced personnel complying with this Service Bulletin. Actual labor hours may vary depending on workforce experience, concurrent maintenance, discovery of other discrepancies, etc.

(2) Qualification of personnel:

- A person properly authorized under 14 CFR 43 to perform aircraft maintenance.

### H. Weight and Balance Change

N/A

I. Electrical Load Data Change

N/A

J. Software Accomplishment Summary

N/A

K. References

06-123838 – Eclipse 550® AMM, current revision  
 06-117751-TR21-2 AMM Temporary revision, VSC-GDCA Upgrade Option

L. Publications Affected

None

M. Export Control

These commodities, technology or software were exported from the United States in accordance with the Export Administration Regulations. These commodities, technology or software are intended for use only in the End User’s country. An export license from the U.S. Department of Commerce may be required before these products can be re-exported, transferred, transshipped on a non-continuous voyage, or otherwise disposed of in any other country, either in their original form or after being incorporated into an end item. Diversion of this end-item or its use contrary to any applicable U.S. government license or to U.S. law is prohibited.

## 2. MATERIAL INFORMATION

A. Materials

Part Number	Description	Qty	Unit of Issue
21-124627-1002 (if required)	GEAR DRIVE COMPRESSOR ASSEMBLY	1	EA.

B. Consumables

Refer to 06-117751-TR21-2 AMM Temporary revision, VSC-GDCA Upgrade Option, if replacement is necessary.

C. Tooling

Nomenclature	Specification	Use
Gap measurement tool	Feeler Gauge, Calipers, etc.	Gap Check

D. Interchangeability/Intermixability of Parts

N/A

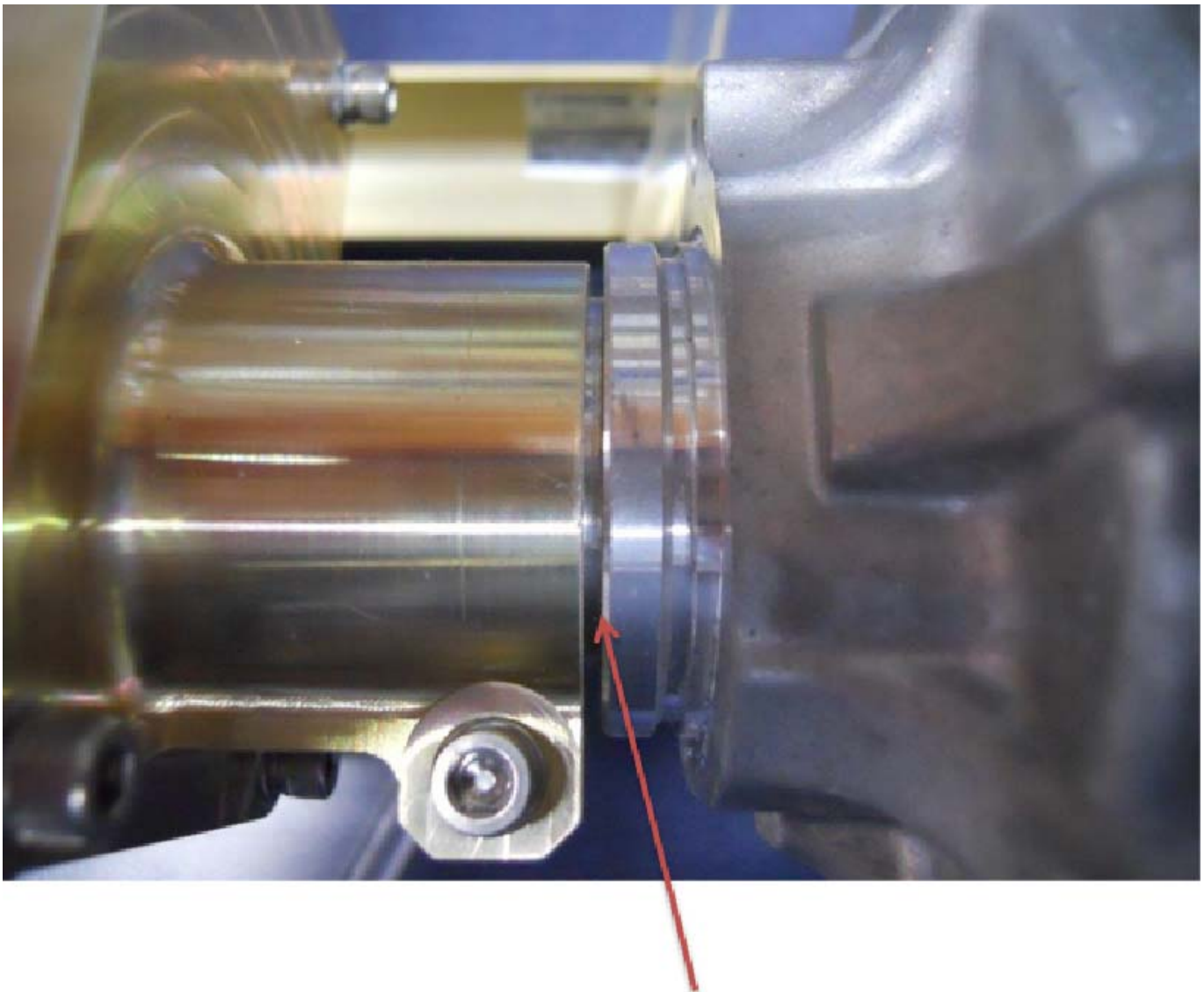
E. Part Re-identification

N/A

## 3. ACCOMPLISHMENT INSTRUCTIONS

### A. Procedure

- (1) Make aircraft safe for maintenance. Refer to AMM 20-00-01- MAKE SAFE FOR MAINTENANCE.
- (2) Gain access to the VCS by removing 211 CT - Nose Access Panel. Refer to AMM-53-10-11-001-801 – Nose Access Panel - Removal.
- (3) Measure the gap between the retention collar and the compressor bearing hub. Measure in at least two places 180 degrees apart. Gap between the gearbox retention collar and compressor bearing hub to be less than .071” upon assembly of the compressor to the gearbox.
- (4) If the gap is too large, remove and replace the GDCA per 06-117751-TR21-2 AMM Temporary revision, VSC-GDCA Upgrade Option.



**Figure 1. Gap Inspection**

## B. Close Up

- (1) Install 211 CT - Nose Access Panel. Refer to AMM-53-10-11-041-801 – Nose Access Panel - Installation.
- (2) If all other maintenance is complete, return aircraft to service. Refer to AMM 20-00-02-051-801 RETURN TO SERVICE (AFTER MAINTENANCE).

## C. Limitations and Procedures

N/A

## D. Parts Disposition

N/A

## E. Cost

Contact Eclipse Aerospace Customer Care for cost information and availability.

## 4. PART MARKING

None.

## 5. RECORD OF COMPLIANCE

Upon completion of this Service Bulletin, make an appropriate maintenance-record entry specifying the Service Bulletin number.

## 6. NOTIFYING ECLIPSE AEROSPACE

On completing this service bulletin, the operator/maintainer shall complete the attached Compliance Record and send it to Eclipse Aerospace via regular mail, fax, or e-mail.

Mailing Address	Eclipse Aerospace Incorporated ATTN: Service Engineering 2503 Clark Carr Loop SE Albuquerque, NM 87106
Fax	1-505-241-8802
E-mail	sbcompliance@eclipse.aero

[Intentionally Blank Page]

